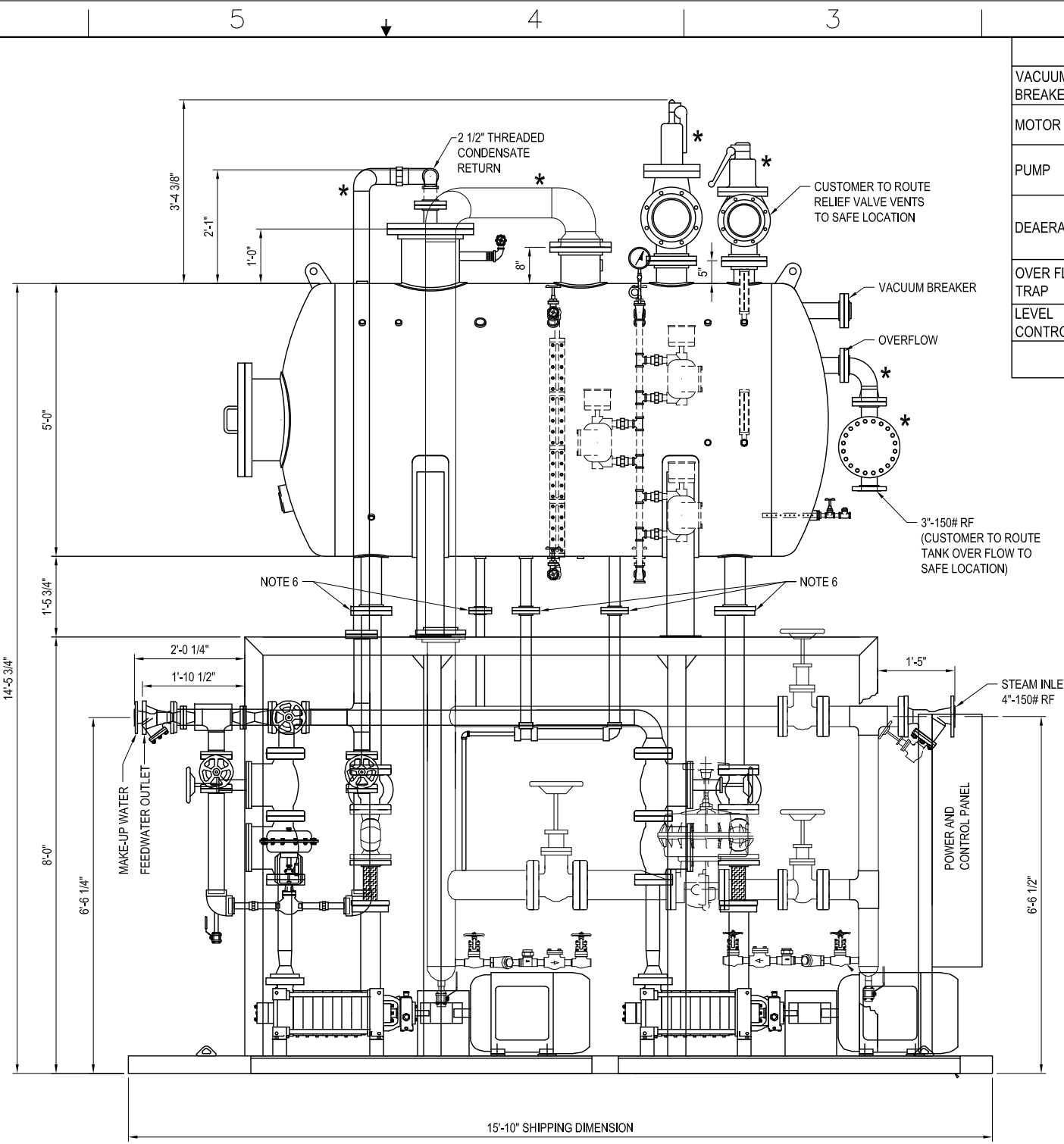


FRONT VIEW



RIGHT SIDE VIEW

| EQUIPMENT DESCRIPTION | | |
|-----------------------|-----------------|---|
| VACUUM BREAKER | DFT | DFT |
| MOTOR | BALDOR | Two 100 % Baldor electric motors 60 HP, 460 V 60 Hz. 65.1 amp TEFC Ser. Factor 1.15 weight 850 lbs. |
| PUMP | CARVER | Two 100% Carver Feedwater pump capacity RS6 A3x2x6DI/CI(198195-7A) all metal seals and wear rings |
| DEAERATOR | BFS INDUSTRIES | BFS deaerator with 45,000 PPH capacity operating pressure 5 psig temperature 227F/ Max. allowable pressure 50 psig at 400F with CRN # R1554.5 |
| OVER FLOW TRAP | WARREN CONTROLS | 313 Overflow trap 131902-1 P/N 031311xxx001 |
| LEVEL CONTROL | | Honeywell single loop controller |

NOTES:

- SOME EQUIPMENT IS OMITTED FOR CLARITY.
- SAFETY VALVE AND STEAM PRV PIPING TO BE PROPERLY SUPPORTED BY CUSTOMER. STEAM NOZZLE LOADING TO BE LESS THAN 500#.
- STEAM PRV SIZED FOR 150 PSI SATURATED STEAM INPUT. OTHER PRESSURES MAY REQUIRE CUSTOMER TO REDUCE PRIOR TO INDECK VALVE.
- EQUIPMENT IS ROTATED FOR CLARITY.
- WILL SHIP IN (2) SEPARATE PARTS - TOP ASSEMBLY & BOTTOM ASSEMBLY. ADDITIONAL SMALL PARTS WILL BE SHIPPED LOOSE AND REQUIRED FIELD ASSEMBLY.
- CUSTOMER TO RECONNECT FLANGES, DP INSTRUMENTS, AND AIR TUBING.
- PIPE CONNECTION DIMENSIONS ARE WITHIN 1" TOLERANCE.
- ** DENOTES SHIP LOOSE PARTS.

INDECK DWG. NO.
 THIS DESIGN OR DRAWING IS NOT SOLD AND IS SUBJECT TO RECALL. REPRODUCTION OR COPYING RIGHTS ARE RESERVED SOLELY TO INDECK POWER EQUIPMENT COMPANY. THE DRAWING HAS BEEN DELIVERED AND RECEIVED ON THE EXPRESSED CONDITIONS THAT IT IS NOT USED IN ANY WAY AGAINST THE INTERESTS AND BENEFITS OF INDECK POWER EQUIPMENT COMPANY, AND THAT THIS DRAWING AND ALL COPIES OF IT WILL BE RETURNED TO INDECK POWER EQUIPMENT COMPANY IMMEDIATELY ON DEMAND, AND THAT ALL INFORMATION DISCLOSED BY THIS DRAWING TO THE HOLDER SHALL BE HELD IN CONFIDENCE.

| REV | DATE | DESCRIPTION | DRWN BY | APPR BY |
|-----|----------|-------------|---------|---------|
| A | 10/31/17 | AS BUILT | LI | GW |

INDECK
 INDECK POWER EQUIPMENT COMPANY . 1111 WILLIS AVENUE . WHEELING, ILLINOIS 60090
 STOCK EQUIPMENT
 45,000 PPH BFS DA
 ITEM 106820/106821 - GA
 DATE 10/04/17 DRAWN BY LI REV. A DRAWING NUMBER 106820-01 SHEET 1
 SCALE 3/8"=1'-0" CHECKED BY AK