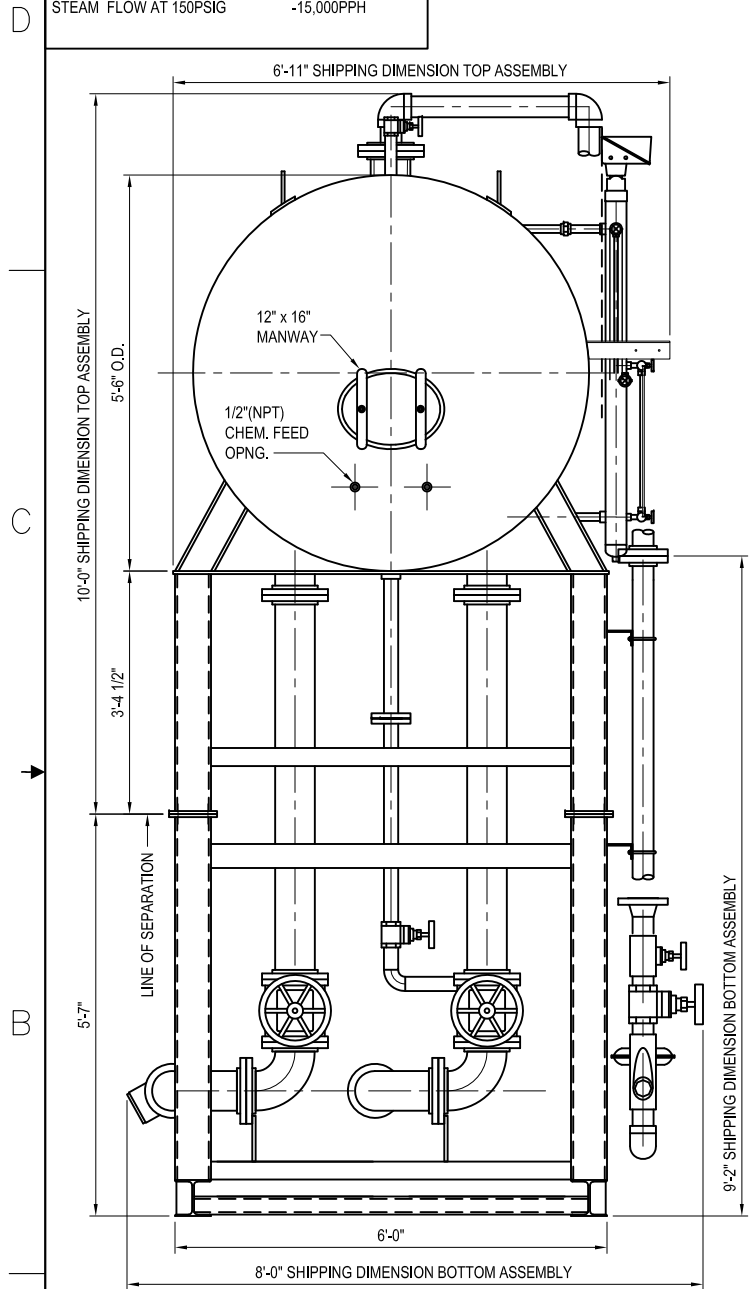


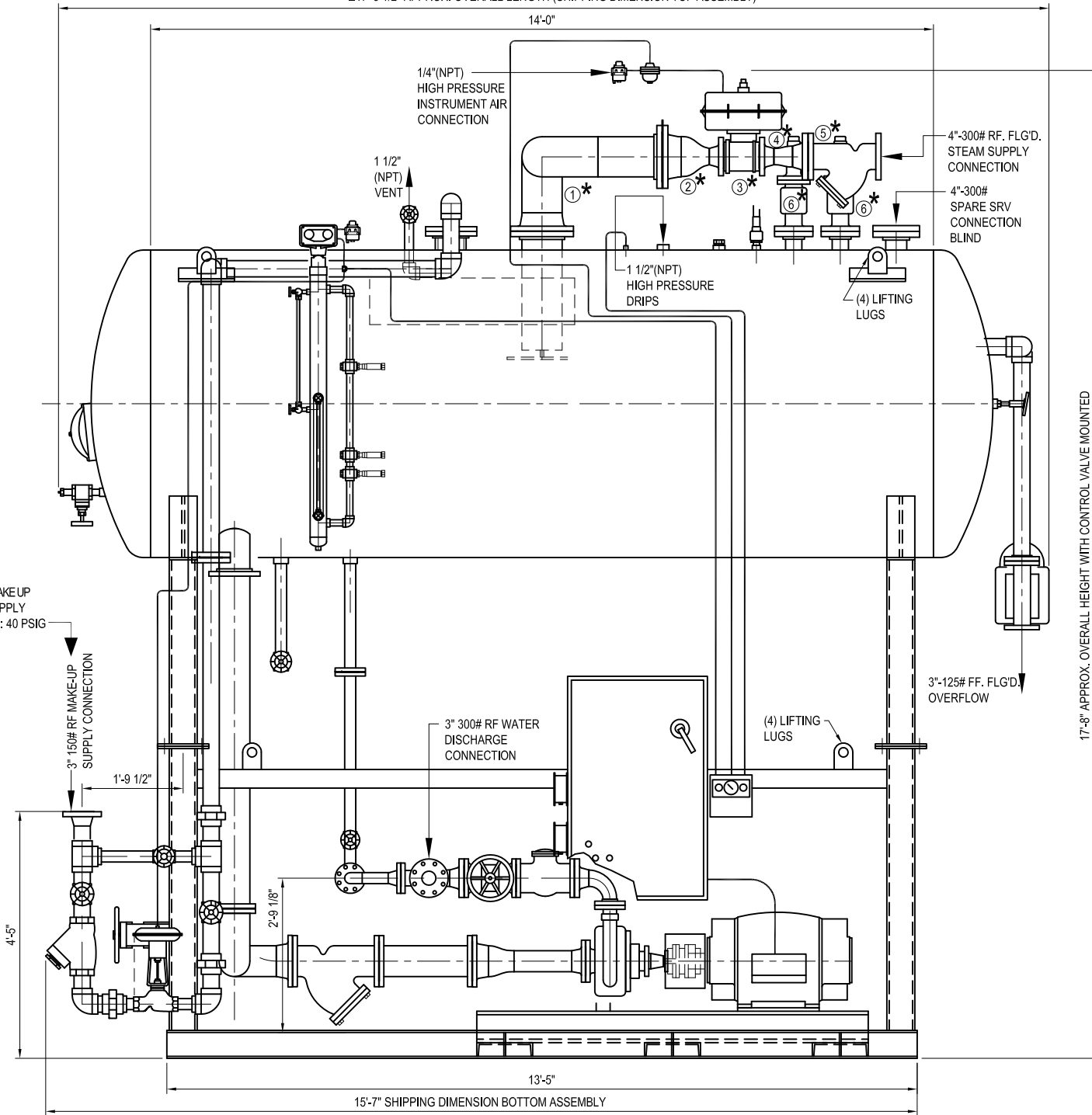
BY CUSTOMER:

- ASSEMBLY HARDWARE LIST:**
 - (40) 3/4"Ø BOLTS WITH WASHER AND NUTS
 - REQUIRED GASKETS.
- ELECTRICAL SERVICE REQUIRED:** - 3P/480V/200A
INSTRUMENTAL AIR REQUIRED: - 100 PSIG (4 CFM)
STEAM FLOW AT 150PSIG: - 15,000PPH

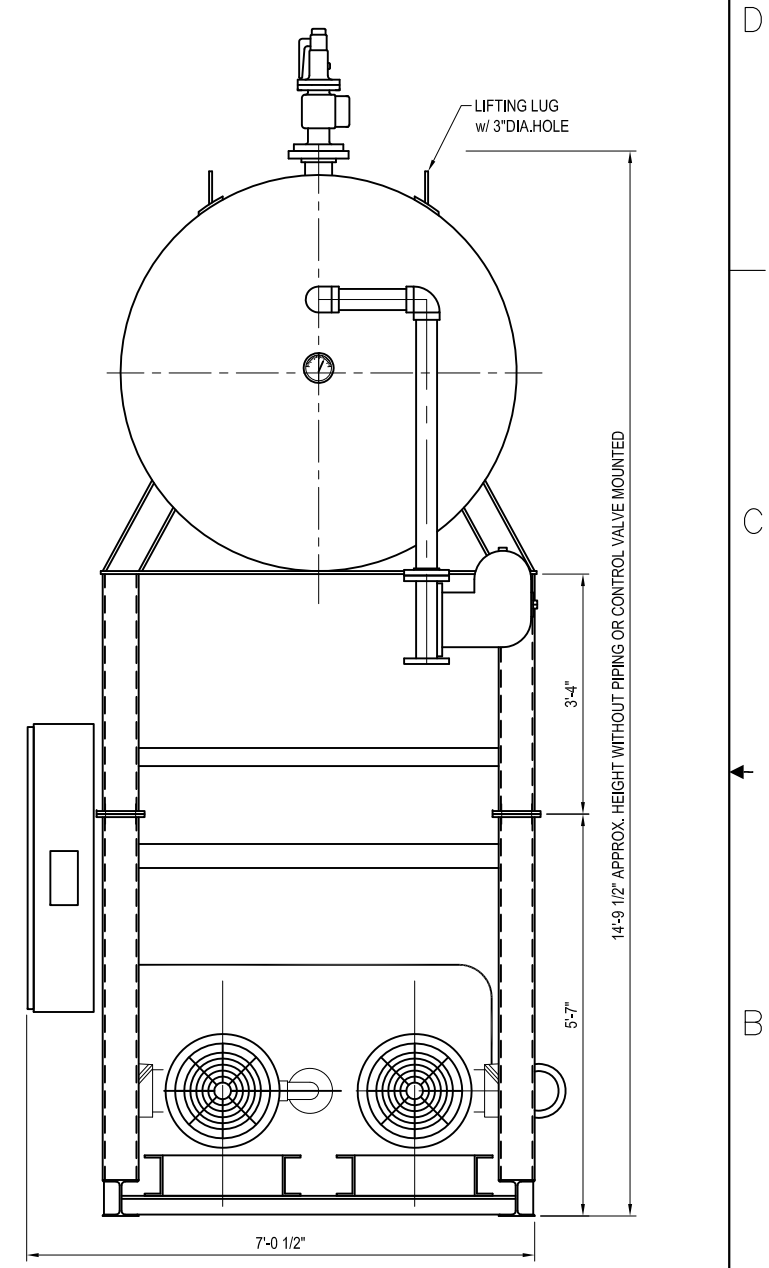


FRONT VIEW

NOTE:
 MAXIMUM MAKEUP
 WATER SUPPLY
 PRESSURE: 40 PSIG



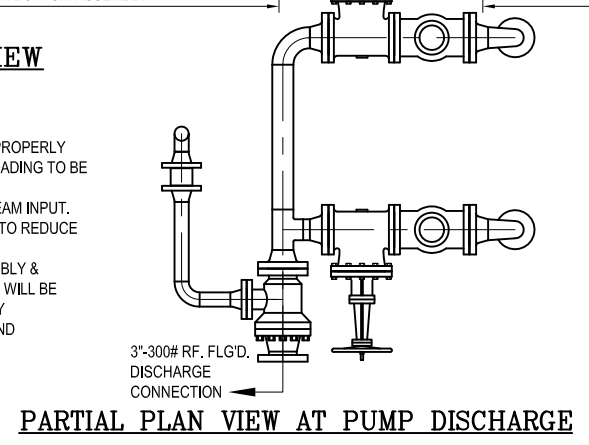
SIDE VIEW



REAR VIEW

NOTES:

- SOME EQUIPMENT IS OMITTED FOR CLARITY.
- SAFETY VALVE AND STEAM PRV PIPING TO BE PROPERLY SUPPORTED BY CUSTOMER. STEAM NOZZLE LOADING TO BE LESS THAN 500#.
- STEAM PRV SIZED FOR 150 PSI SATURATED STEAM INPUT. OTHER PRESSURES MAY REQUIRE CUSTOMER TO REDUCE PRIOR TO INDECK VALVE.
- WILL SHIP IN (2) SEPARATE PARTS - TOP ASSEMBLY & BOTTOM ASSEMBLY. ADDITIONAL SMALL PARTS WILL BE SHIPPED LOSE AND REQUIRED FIELD ASSEMBLY
- TOP ASSEMBLY WEIGHT (DA, STORAGE TANK AND AUXILIARY):
 - EMPTY - 7,000#
 - FLOODED - 24,000#
- BOTTOM ASSEMBLY WEIGHT - 9,000#
- ** DENOTES SHIP LOOSE PARTS.



PARTIAL PLAN VIEW AT PUMP DISCHARGE

SHIP LOOSE PARTS LIST:

- 8" STEAM PIPE
- 8" TO 3" REDUCER
- 3" STEAM CONTROL VALVE
- 3"x5" REDUCER
- 5" STRAINER
- (2) 3" RELIEF VALVE

INDECK DWG. NO.
 THIS DESIGN OR DRAWING IS NOT SOLD AND IS SUBJECT TO RECALL. REPRODUCTION OR COPYING RIGHTS ARE RESERVED SOLELY TO INDECK POWER EQUIPMENT COMPANY. THE DRAWING HAS BEEN DELIVERED AND RECEIVED ON THE EXPRESSED CONDITIONS THAT IT IS NOT USED IN ANY WAY AGAINST THE INTERESTS AND BENEFITS OF INDECK POWER EQUIPMENT COMPANY, AND THAT THIS DRAWING AND ALL COPIES OF IT WILL BE RETURNED TO INDECK POWER EQUIPMENT COMPANY IMMEDIATELY ON DEMAND, AND THAT ALL INFORMATION DISCLOSED BY THIS DRAWING TO THE HOLDER SHALL BE HELD IN CONFIDENCE.

REV	DATE	DESCRIPTION	DRWN BY	APPR BY
A	05/14/15	AS BUILT	LI	AK

INDECK
 INDECK POWER EQUIPMENT COMPANY . 1111 WILLIS AVENUE . WHEELING, ILLINOIS 60090

STOCK EQUIPMENT

80,000 PPH INDUSTRIAL STEAM DA

ITEM 104126 - GA

DATE	05/01/15	DRAWN BY	LI	REV.	A	DRAWING NUMBER	104126-01	SHEET 1
SCALE	3/8"=1'-0"	CHECKED BY	AK					