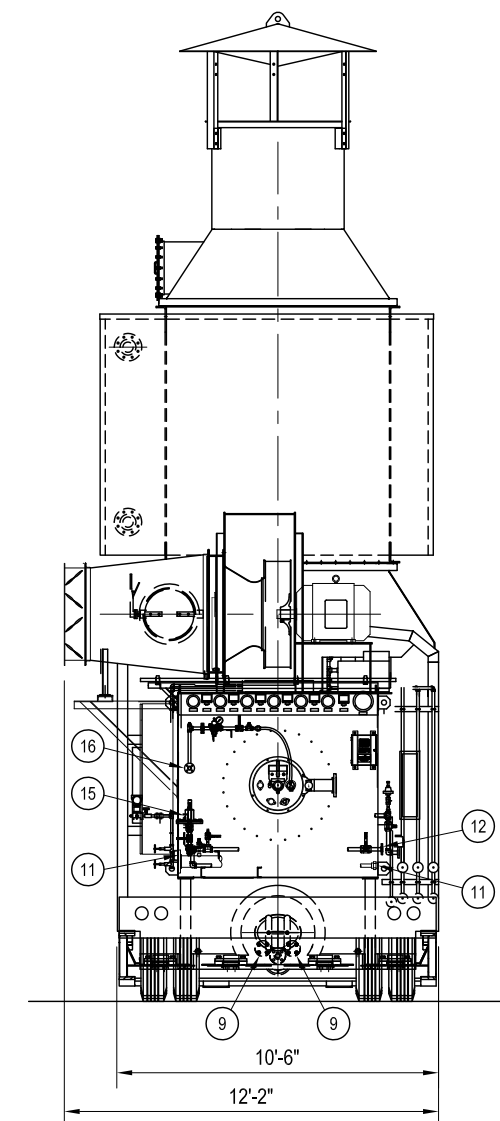
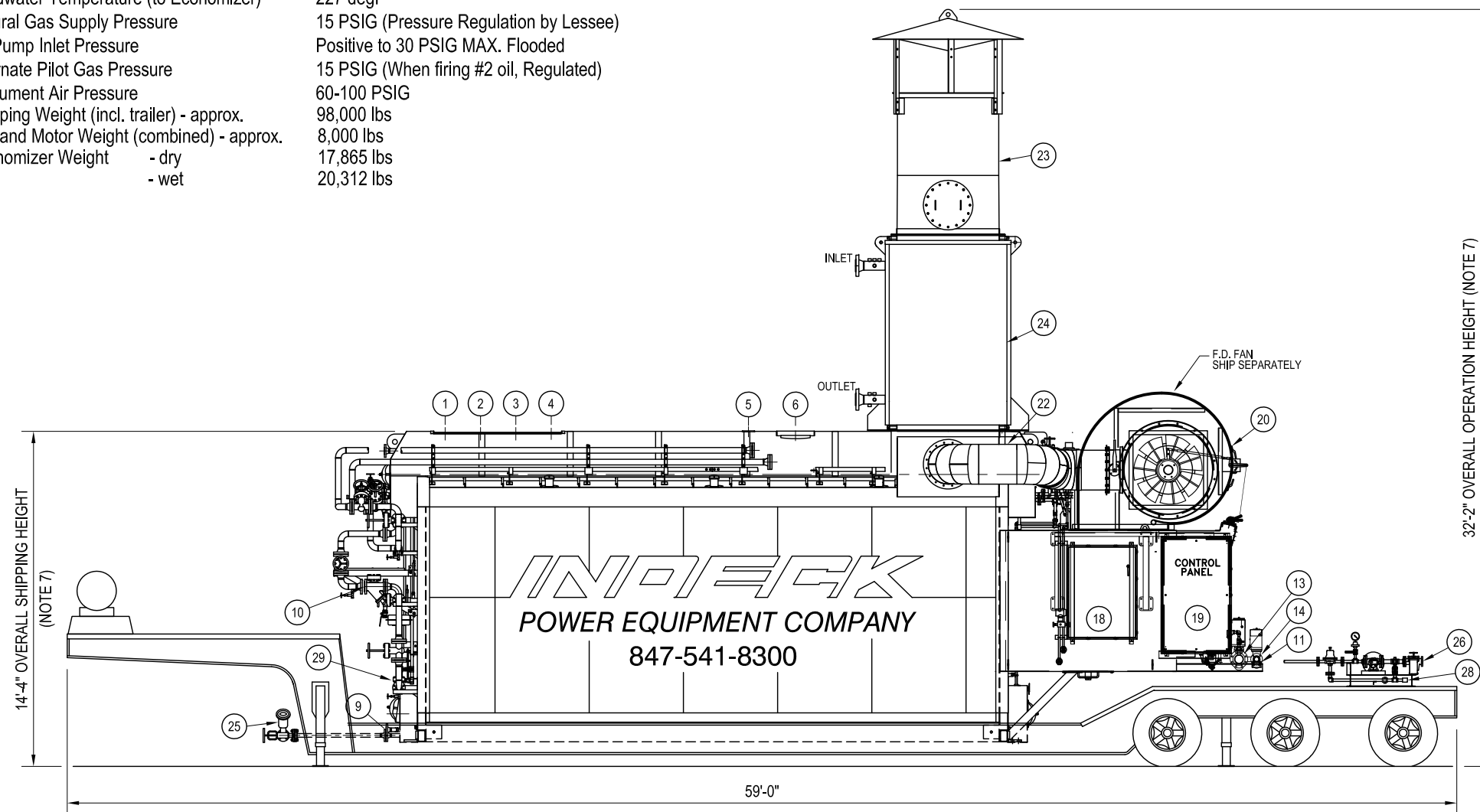


83,000 PPH 395 PSI RENTAL BOILER

UNIT REFERENCE:
TRAILER 223L
TRAILER 224L
TRAILER 229L

DESIGN & OPERATING DATA

Indeck Boiler Model	OT-75
Continuous Capacity (with Economizer)	75,000 PPH (83,000 PPH)
Design Pressure	395 PSIG
Design Temperature	Saturated
Operating Pressure (NRV Outlet)	125 - 360 PSIG
Feedwater Pressure	60 - 100 PSIG Above operating Pressure
Feedwater Temperature (to Economizer)	227 degF
Natural Gas Supply Pressure	15 PSIG (Pressure Regulation by Lessee)
Oil Pump Inlet Pressure	Positive to 30 PSIG MAX. Flooded
Alternate Pilot Gas Pressure	15 PSIG (When firing #2 oil, Regulated)
Instrument Air Pressure	60-100 PSIG
Shipping Weight (incl. trailer) - approx.	98,000 lbs
Fan and Motor Weight (combined) - approx.	8,000 lbs
Economizer Weight - dry	17,865 lbs
- wet	20,312 lbs



STEAM

1. 2 1/2"-600# Spare (Blanked)
2. 2 1/2"-600# Spare (Blanked)
3. 2 1/2"-600# Safety Valve Connection
4. 2"-600# Safety Valve Connection
5. 1" NPT Drum Vent / AUX Connection
6. 8"-300# Main Steam Outlet Connection
9. (2) 1 1/2"-300# Mud Drum Heating Coil (In/Out)

BOILER FEEDWATER

10. 2 1/2"-300# Feedwater Supply Connection

BURNER / FUEL TRAINS (Nat Gas or #2 Oil Fired)

11. 1" NPT Atomizing Air Inlet (Atomizing steam is prepped from steam drum)
12. 1" 150# RF Instrument Air Lessee Connection
13. 4"-150# Natural Gas Inlet Connection
14. 2"-150# Natural Gas Vent
15. 3/4" NPT Pilot Gas Regulator
16. 3/4" RF FLG Pilot Gas Train Vent

POWER DISTRIBUTION & CONTROLS

18. Electrical Power Distribution Cabinet - 480V/60HZ/3ph Power Supply
19. Burner Management & Combustion Control Panel

MISCELLANEOUS

20. FD Fan - Motor - Silencer - FGR Mixbox - Dampers *
22. FGR Ductwork - Damper *
23. Flue Gas Stack with Integral Transition - Raincap *
24. Economizer - Associated Piping - Safety Valve - Vent - Drain *
25. (2) Mud Drum Blowdown Valves *
26. 1 1/2" RF FLG Supply Connection to #2 Fuel Oil Pump System
28. 1" FNPT Oil Return
29. 1" FNPT Continuous Blowdown Lessee Connection

NOTES

1. Items marked with "*" are shipped loose. Additional items also shipped loose.
2. Firing unit on #2 fuel oil requires natural gas or vaporous propane pilot fuel to be supplied by Lessee.
3. Client to provide adequate weather protect for burner, controls and personal. This includes freeze protection.
4. Client is responsible for heat tracing and insulating feedwater piping for personal and freeze protection.
5. Spare steam drum safety valve and vent connections available.
6. Client responsible for determining trailer cribbing material and method. Drawing representation is for reference only.
7. Shown dimension is with the assumption of 6 inches distance between bottom of trailer and ground.
8. Fasteners and Gaskets by Lessee.

INDECK 83,000 PPH RENTAL BOILER